

B2|Integrated Operations

B2|Integrated Operations is an interactive tool that allows co-visualization of multiple data types, both prognosis and measured data, in a common visualisation engine where correlations and evaluation can be done in a cross disciplinary team.

Data types

A number of data types are supported, some examples are

- Well plans and surveys with calculations of dogleg severity
- Wells and actual surveys
- Definitive surveys
- Well picks
- Uncertainty ellipses
- Casings
- Geological models and lithology
- Faults
- Horizons and other interpretations
- Non-seismic horizons
- Risk and experience knowledge
- Equipment such as BHA and similar
- Time- and depth-based measurements and logs (real time data included)

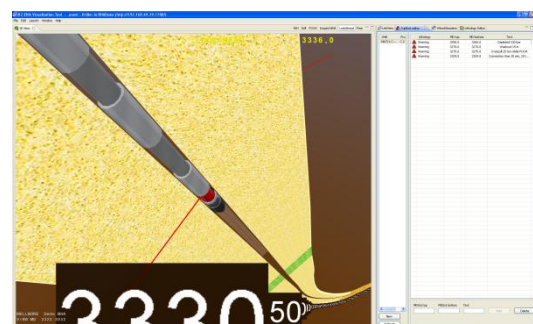
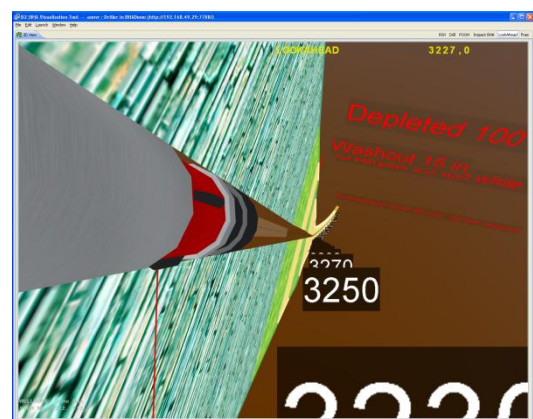
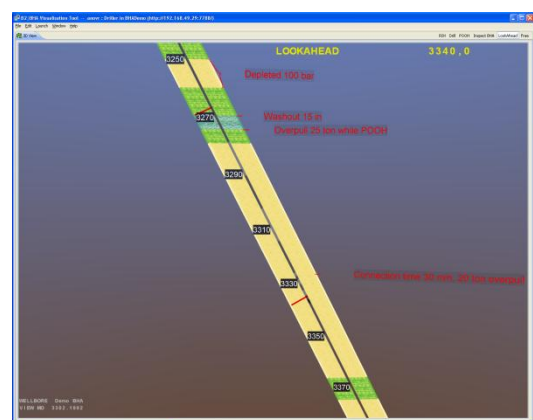
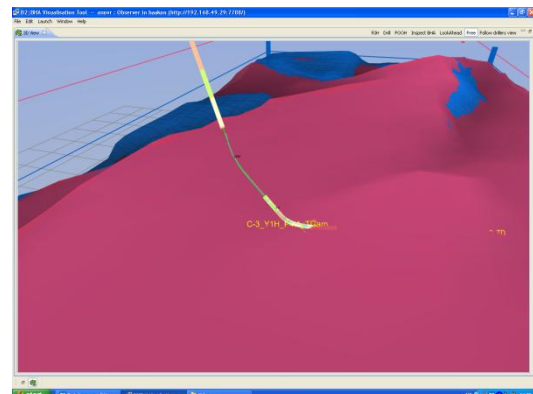
All of the data types can be integrated into a common 3D view with 2D overlays.

Information stores

The tool links to existing master databases such as:

- Halliburton Landmark OpenWorks
- Halliburton Landmark EDM
- Completions Services Completion Sting Design (CSD)
- Knowledge Systems Predict
- WITSML 1.2, 1.3, 1.4
- Various in-house and legacy databases

The B2 suite contains a framework that allows extension and creation of new connectors to master databases as well as customization and extension of the functionality of the visualization tool.



Functionality

Logs and other measurements can be represented alongside of the wellbore, and details can be inspected in a table form if relevant, so that engineers can inspect the detailed values.

Color-coded lollipops connected to the wellbores are used to show handles for the logs and measurements, and the log representation is configurable in the GUI. This can also be preset according to desired company standards in the tool.

Mouse-over functions are used extensively in the 3D Viewer to provide context information and menus. An example of this is hovering the mouse over an element in the bottom hole assembly, giving the engineer context information about the specific component (bit, stab, pipe, collar, and similar).

Most of the graphical representation can be easily customized, to adapt to certain ways of using the tool.

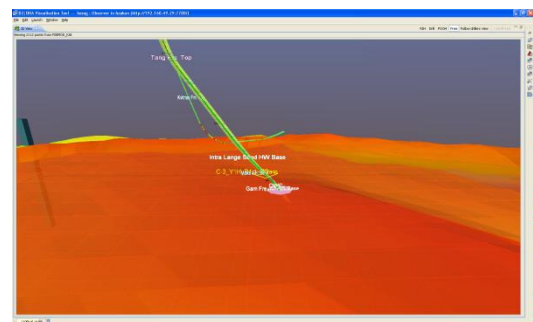
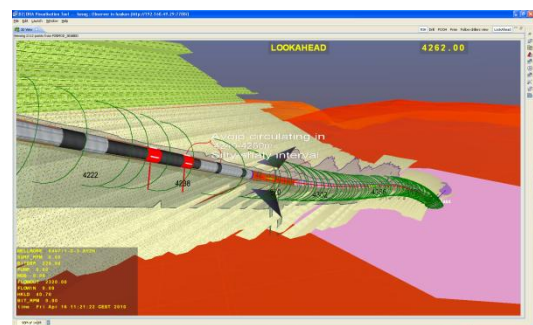
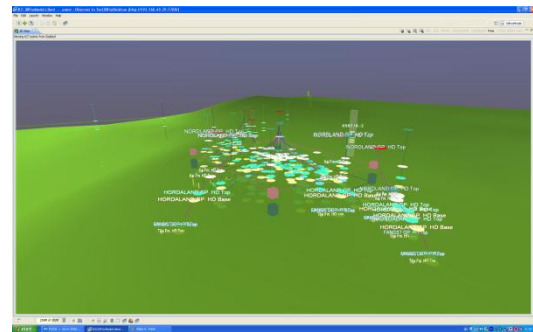
Relevant work flows

- Drilling support at rig or installation
- Operations monitoring in onshore operations centers
- Drilling analysis and optimisation

B2 infrastructure

The **B2|Integrated Operations** is one of the components in the B2 suite. The B2 suite also contains the required server and integration components, such as the **B2|Collaboration Server**, **B2|Meta Model** and **B2|Integration Modules**.

This common infrastructure serves end-user application clients such as the **B2|Integrated Well Planning**, **B2|Integrated Operations**, **B2|Virtual View** and **B2|Virtual Collaboration Arena**.



Contact information

Visual Solutions AS (worldwide HQ)
Møllendalsveien 1A, 5009 Bergen, Norway
Tel.: +47 5532 0000
Email: info@bbvisuals.no
Web: <http://www.bbvisuals.no>

BB Visual Solutions Inc. (US)
16111 Cairway, Suite 150, Houston, TX 77084, US
Tel.: +1 832-296-4690
Email: info@bbvisuals.com
Web: <http://www.bbvisuals.com>